



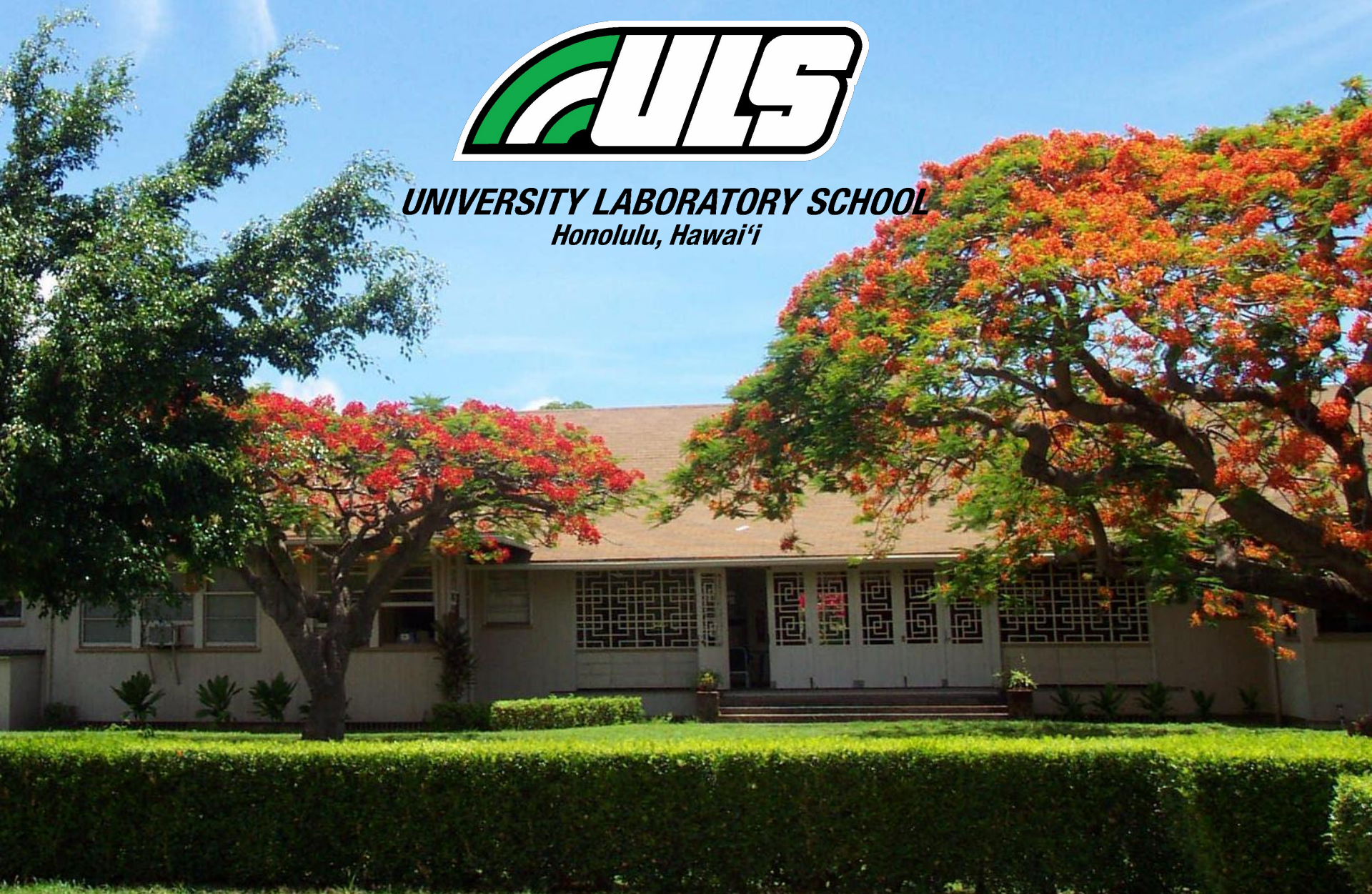
Welcome video - Admissions (5:30)

Click on image below.





UNIVERSITY LABORATORY SCHOOL
Honolulu, Hawai'i





UNIVERSITY LABORATORY SCHOOL
Honolulu, Hawai'i

A Hawai'i Public Charter School

ULS Administrative Team



A. Keoni Jeremiah
Principal



Tracy Teixeira
Dean of Students



Shareef Wang
Business Manager



Leah Tassill
Vice Principal



Walt Quitan
Athletic Director

ULS School Counselors



Dayna Kitamura
School Counselor 6-12



Asia Botelho
School Counselor K-5



Christina Rivera
College & Career
Counselor

ULS Overview

- Mission and Vision
- Features of ULS
- As a Laboratory School
 - Partnership with CRDG
- As a Charter School
- School Program



Mission

To provide the best possible education to its students while supporting the creation, evaluation, and dissemination of quality programs for all students kindergarten through grade 12.



ULS Vision

All students graduate ready for college, work, and responsible citizenship.



At ULS we believe



- All students can achieve great things, including academic, and social and emotional success.
- Our students are prepared for college, work and responsible citizenship through a comprehensive well-rounded education program.
- We serve the greater education community through our three strategic focus areas:
 - education of our own students
 - research in educational best practices
 - dissemination and demonstration of these educational best practices

At ULS we provide

- A quality education program for all students.
- An optimal setting for organized curriculum research and development.
- A demonstration site for exemplary working curriculum model.
- A site for graduate and undergraduate research and training.

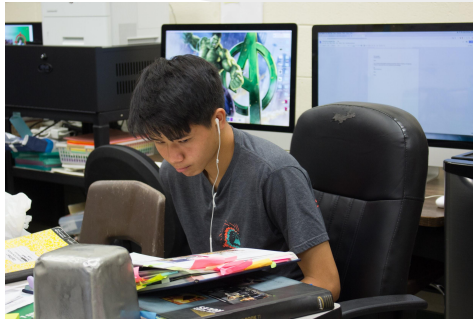


Features of ULS

- Demonstrations of Knowledge
- Common Curriculum by Grade-Level Cohort
- Heterogeneous Grouping
- Research



Demonstrations of Knowledge



We create a community of learners that cast all students in the role of authentic practitioners of the disciplines of knowledge and habits of mind.

We emphasize direct experience, hands-on activity, and higher order intellectual processes.

We include experimentation and inquiry, simulations, role-playing, and cooperative learning groups; and use constructivist approaches as well as direct instruction where appropriate.

Common Curriculum by Grade-Level Cohort

All students enroll in a common curriculum by grade-level cohort that includes daily instruction in:

- English language and literature
- history and social science
- natural science
- mathematics
- visual arts
- performing arts
- physical education



Students are taught in common classes without tracking.

Heterogeneous Grouping

Heterogeneous grouping in all classes from across a diverse, purposive lottery of students to represent a demographic cross section of Hawai'i. This cross-section of students reflect the ethnicity, socio-economic status, and school achievement levels of Hawaii's public school system.



Research

The school's emphasis on education research and role in the research and development community makes it possible for us to achieve our mission and vision. ULS faculty members and research partners work with and serve as principal investigators on a wide range of research projects, both short-term and longitudinal.



Our Role as a Laboratory School

In addition to providing high quality education for our own students, the function of this school is experimentation and innovation in education with the intent to disseminate.

ULS hosts hundreds of visitors annually to observe our unique collaborative learning environment, curriculum implementation, and innovative educational practices.



“Disciplines of Knowledge” Perspective

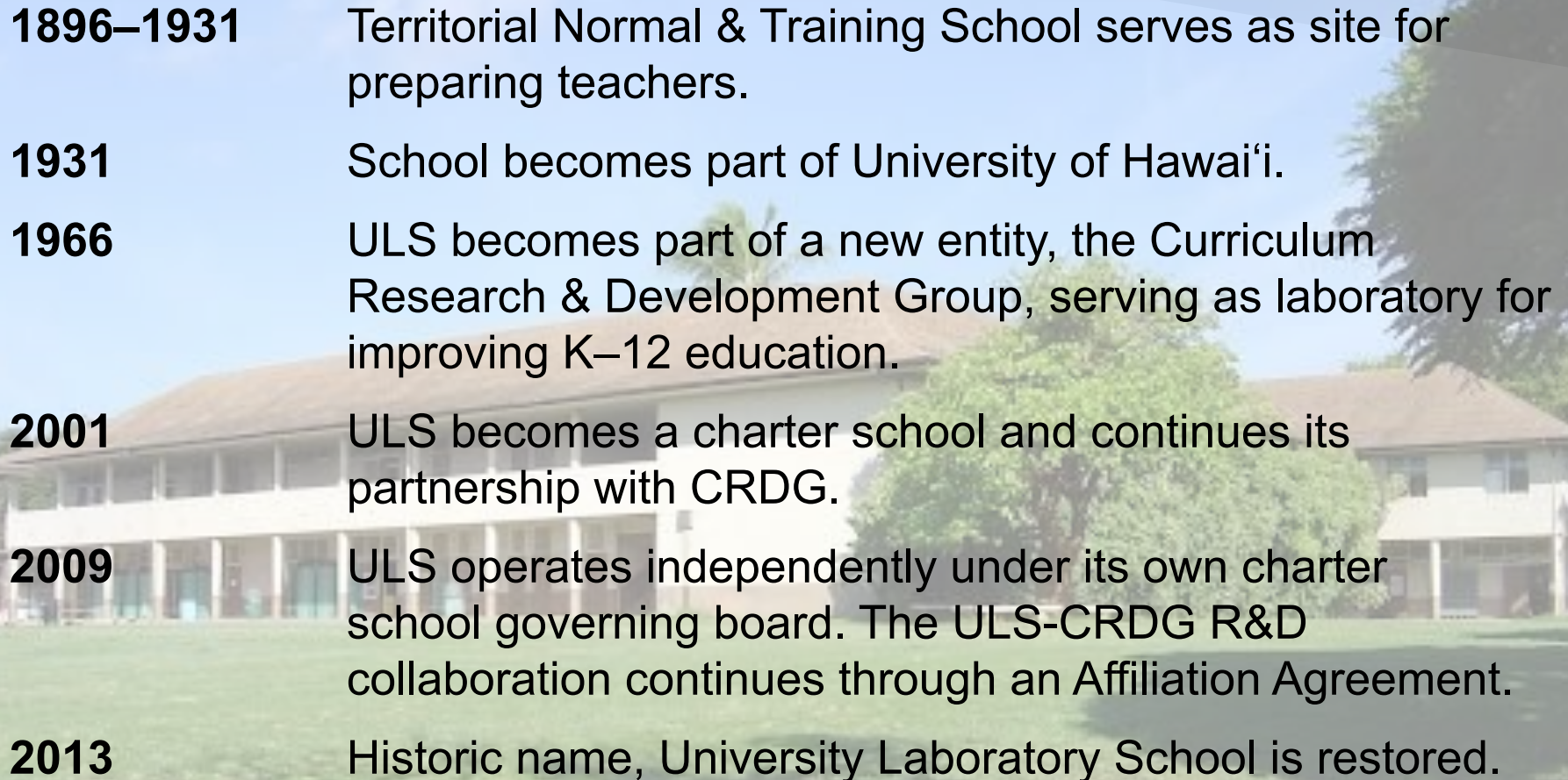
Students should be taught the nature and practices of a discipline to promote deep engagement and conceptual development in that discipline.



Teachers should be experts/practitioners in their discipline in order to demonstrate and model these practices in the most authentic way possible.



ULS Historical Roots

- 
- 1896–1931** Territorial Normal & Training School serves as site for preparing teachers.
- 1931** School becomes part of University of Hawai'i.
- 1966** ULS becomes part of a new entity, the Curriculum Research & Development Group, serving as laboratory for improving K–12 education.
- 2001** ULS becomes a charter school and continues its partnership with CRDG.
- 2009** ULS operates independently under its own charter school governing board. The ULS-CRDG R&D collaboration continues through an Affiliation Agreement.
- 2013** Historic name, University Laboratory School is restored.

Partnership with UH COE and CRDG

The Curriculum Research & Development Group (CRDG) is an organized research unit in the College of Education at the University of Hawai'i Mānoa. Since 1966, CRDG has served the educational community locally, nationally, and internationally.

MISSION

The Curriculum Research & Development Group (CRDG), with its associated Laboratory School, is an organized research unit in the College of Education at the University of Hawai'i Mānoa that contributes to the body of professional knowledge and practice in teaching and learning, curriculum development, program dissemination and implementation, evaluation and assessment, and school improvement. CRDG conducts research and creates, evaluates, disseminates, and supports educational programs that serve students, teachers, parents, and other educators in grades PreK–20.



CRDG

CURRICULUM RESEARCH
& DEVELOPMENT GROUP

UNIVERSITY OF HAWAII AT MĀNOA

CRDG-ULS Developed Programs



COE–ULS PARTNERSHIP

COE

Research &
Development (R&D)

- Exploration
- Development
- Evaluation
- Dissemination



ULS

Laboratory for

- Exploration
- Experimentation
- Assessment

Demonstration Site

- Visitors
- UH Mānoa COE
- Best Practices

Agreement to Participate

ULS is a special focus school of choice, and parents must be willing to accept the mission of the school and agree that their child will participate fully in all components of the ULS-COE/CRDG research and educational



What is a Charter School?

Charter schools are nonsectarian public schools of choice that operate with freedom from many of the regulations that apply to traditional public schools; the basic concept is that charter schools exercise increased autonomy in exchange for greater accountability.

As a public school we are still guided by:

- Hawaii State Charter School Law
- Federal Education Legislation
- Federal Individuals with Disabilities Act (IDEA)



The “charter” details the school’s mission, program, goals, students served, methods of assessment, and ways to measure success.

ULS Charter Conditions

The school enrolls a cross-section of students who typify the Hawai'i school population.

All students participate in the same comprehensive education program

All students are taught in common classes without tracking nor are there courses of varying rigor. The ULS belief is that the best should be available to all.



Students and their parents must be willing to accept innovative and experimental programs that challenge the norms of current educational practices and change continually.

ULS Governing Board

The purpose of the Governing Board of the University Laboratory School is to set policy and provide oversight for ULS in accordance with HRS, Chapter 302D. The Board ensures that ULS complies with the terms of the charter contract between the authorizer and the School, which pertain to and manage the financial, organizational, and academic viability of the school.

ULS Governing Board Members

Denise Yoshimori-Yamamoto, Chair

Everett Ohta, Vice-Chair

Edward Aquino, Secretary

Preet Nijjar, Treasurer

Tina Keane

Aaron Levine

Melvina Nakao

Travis Palmeira

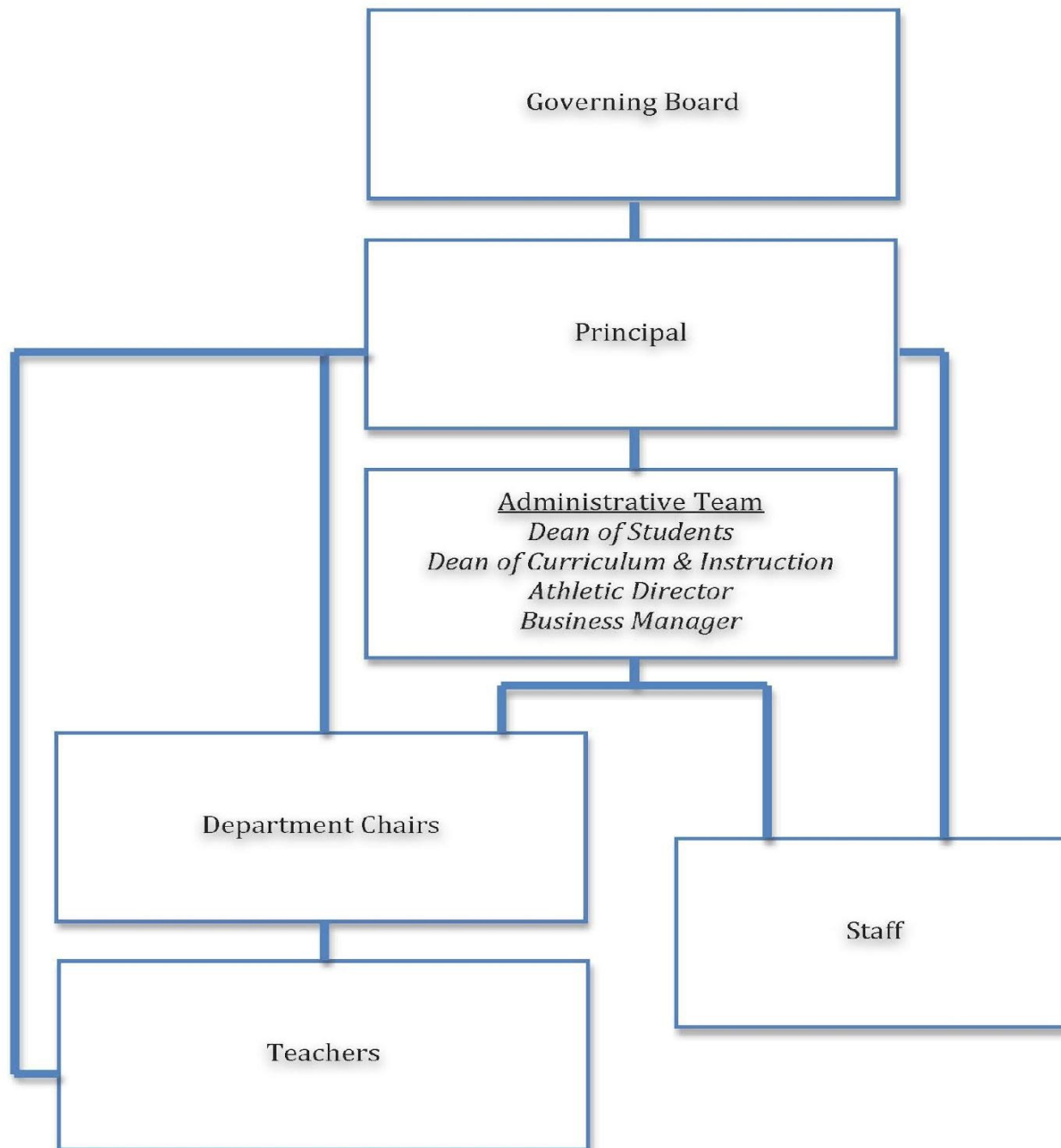
Ishita Shah

Kara Suzuka

Miki Tomita

Karyn Yoshioka

A. Keoni Jeremiah, Principal (ex-officio)



Funding

Main funding:

Charter School Per-Pupil Allocation

Other funding:

Support Organizations 501(c)(3)

ULS Booster Club

ULS Foundation

ULS Alumni Association



Features of the School

Instructional Time

6th Grade - 12th Grade
Monday, Tuesday, Thursday & Friday 7:45am - 3:15pm
Wednesday 7:45am - 2:35pm

Kindergarten - 5th Grade
Monday, Tuesday, Thursday & Friday 8:00am - 2:15pm
Wednesday 8:00am - 1:15pm

Student Enrollment

Kindergarten	10	6th Grade	56
1st Grade	10	7th Grade	56
2nd Grade	10	8th Grade	56
3rd Grade	10	9th Grade	56
4th Grade	10	10th Grade	56
5th Grade	10	11th Grade	56
		12th Grade	56



ULS Grades K - 5 Program

Grades K-1	Grades 2-3	Grades 4-5
Art	Art	Art
English Language Arts	English Language Arts	English Language Arts
Mathematics	Mathematics	Mathematics
Music	Music	Music
Physical Education	Physical Education	Physical Education
Science	Science	Science
Social Studies	Social Studies	Social Studies

Social Emotional Learning: Toolbox, Voices Literature & Writing

ULS Grade 6 - 8 Program

	Grade 6	Grade 7	Grade 8
English	Dramatic Language & Composition	Comedic Language & Composition	Narrative Literature & Composition
Math	Connected Mathematics Program 3 (CMP3)	Connected Mathematics Program 3 (CMP3)	Connected Mathematics Program 3 (CMP3)
Science	The Local Environment (Foundational Approaches in Science Teaching 1)	Matter and Energy in the Biosphere (Foundational Approaches in Science Teaching II)	Change Over Time (Foundational Approaches in Science Teaching III)
Social Studies	Pacific Studies & Anthropology	World Geography & Early Civilizations	Early America & United States Constitution
Art	Drawing & Painting	Sculpture, Drawing & Painting, Ceramics, Fiber Arts	
Music	Beginning Band, Choir, Orchestra	Intermediate Band, Choir, Orchestra	
Physical Education	Physical Education		
Other (required)	Learning Laboratory		

ULS Grade 9 - 12 Program

	Grade 9	Grade 10	Grade 11	Grade 12
English 4 yrs. req.	Language, Literature and Writing	Asian, Pacific, Local Literature & Writing	Literature of the Americas & Writing	British/ European Literature & Writing
Math 4 yrs. req.	Integrated Math I	Integrated Math II	Integrated Math III	Integrated Math IV
Science 4 yrs. req.	Marine Science with Lab	Practices in Physics & Technology with Lab	Chemistry with Lab	Biology With Lab
Social Studies 4 yrs. req.	Modern History of Hawai'i	Modern World History	United States History & Government	Civics & Ethics
Second Language 3 yrs. req.	N/A	Spanish I, Hawaiian I, Japanese I	Spanish II, Hawaiian II, Japanese II	Spanish III, Hawaiian III, Japanese III
Art 4 yrs. req.	Students choose from Sculpture, Fiber Arts, Ceramics, Drawing & Painting or Printmaking			
Music 4 yrs. req.	Students participate in Band, Chorus or Orchestra			
Physical Education	Phys. Ed., Health	P.E. Elective: Weightlifting; Fitness and Flexibility; Yoga and Meditation		
Other (required)	Freshman Seminar- Holomua	College & Career Seminar (three semesters)		
Electives 3 credits	N/A	Computer Science, Fitness & Flexibility; Global Leadership; Hawaiian Studies; Hula & Chant; Japanese Traditional & Pop Culture; Math League, Science Research; Speech & Debate; Transformative Leadership; Wearable Art; Weightlifting; Yearbook (Electives vary by year)		

Electives

Current enrichment elective classes offered for grades 10–12:

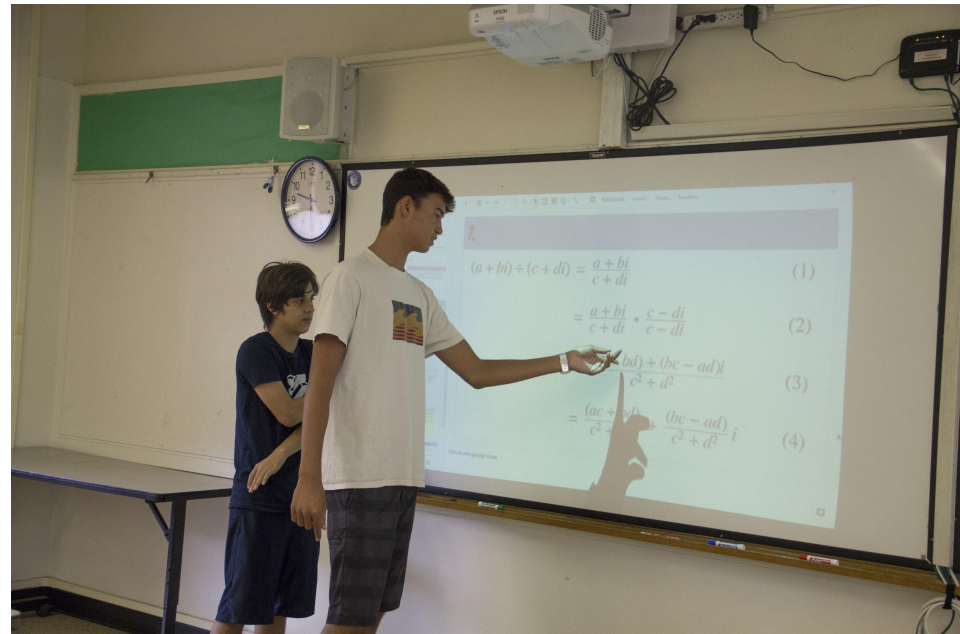
Digital Photography
Fitness & Flexibility
Global Issues through Art
Global Leadership
Hawaiian Studies
Hula & Chant
Japanese Culture
Kimono Culture

Science Research
Select Choir
Speech & Debate
Wearable Art
Weightlifting
Yearbook
Yoga & Meditation



The Importance of Technology

ULS is committed to 21st century skills, including technological literacy. We aim to develop and support our community of learners through engaging technology and cutting-edge practices.



Social and Emotional Learning (SEL) & School Climate

SEL Curricula:

TOOLBOX (Grades K-8)

Voices Literature and Writing (Gr. K-5)

Facing History and Ourselves (Gr. 6-12 English, Social Studies)



School-Wide initiatives:

Kindness Activities

Mindfulness

Peer Mentoring

Advisory

Community Service Learning Projects

Blue Zones Project



Diploma Waiver

- The school has a diploma waiver from the Hawai'i State Board of Education (BOE) Policy 102-15, on graduation requirements for high school for the effective school years 2013-2022, this is associated to the applicable graduating classes of 2014-2025.
- The school's program opens doors for post-high-school opportunities, preparing all students for admission to higher education so they have choices for their futures.

Here's what we offer you...

Course Requirements	High School Diploma	Board of Education Recognition Diploma (Voluntary)	Board of Education Recognition Diploma with Honors (Voluntary)	University Laboratory School Diploma
English	4.0 credits including ELA 1 (1 credit) and ELA 2 (1 credit)	4.0 credits including ELA 1 (1 credit), ELA 2 (1 credit), and Expository Writing (0.5 credit) or the equivalent*	4.0 credits including ELA 1 (1 credit), ELA 2 (1 credit), and Expository Writing (0.5 credit) or the equivalent*	4.0 credits, including Speech, Poetry & Writing; Asian and Pacific Lit. & Writing; Lit. of the Americas & Writing; British/European Lit. & Writing
Social Studies	4.0 credits including Modern History of Hawaii (0.5 credit) and Participation in a Democracy (0.5 credit)	4.0 credits including Modern History of Hawaii (0.5 credit) and Participation in a Democracy (0.5 credit)	4.0 credits including Modern History of Hawaii (0.5 credit) and Participation in a Democracy (0.5 credit)	4.0 credits, including Modern History of Hawai'i; Modern World History & Geography; United States History & Government; Ethics (0.5); Comparative Political/Economic Systems (0.5)
Mathematics	3.0 credits	4.0 credits including, as a minimum, Algebra 1, Geometry, and Algebra II or the equivalent	4.0 credits including, as a minimum, Algebra 1, Geometry, and Algebra II or the equivalent	4.0 credits, including Geometry Learning Project; Integrated Math I/II, III, and IV.
Science	3.0 credits	3.0 credits including 2.0 credits in Biology, Chemistry, and/or Physics	3.0 credits including 2.0 credits in Biology, Chemistry, and/or Physics	4.0 credits, including Marine Science with Lab; Practices in Physics & Technology with Lab; Chemistry with Lab; Biology with Lab
World Language, Fine Arts, Career and Technical Education	2.0 credits in one of the specified courses	2.0 credits in one of the specified courses	2.0 credits in one of the specified courses	3.0 credits in Second Language, including Language I, II, III 4.0 credits in Performing Arts, including Band, Choir, or Orchestra 4.0 credits in Visual Arts, including Drawing, Painting, Sculpture, Ceramics, and/or Fiber Arts
Senior Project	Not required	1.0 credit	1.0 credit	N/A
Physical Education	1.0 credit including required PE (0.5 credit) and required PE elective (0.5 credit)	1.0 credit including required PE (0.5 credit) and required PE elective (0.5 credit)	1.0 credit including required PE (0.5 credit) and required PE elective (0.5 credit)	0.5 credit
Health	0.5 credit	0.5 credit	0.5 credit	0.5 credit
Personal/ Transition Plan	0.5 credit	0.5 credit	0.5 credit	2.0 including Holomua seminar and College & Career seminar
Electives	6.0 credits	5.0 credits	5.0 credits	3.0 credits
TOTAL	24.0 credits	25.0 credits	25.0 credits	33.0 credits

School Program and Curricula Differs from Others

- Comprehensive, liberal education
- Inquiry-, problem-, and project-based
- Requires active learning and engagement
- Challenging
- Experimental



ULS Opportunities

- Writing Contests
- Mānoa Academy
- Visual Art Awards
- Hawai‘i Youth Symphony
- Oahu Select Band
- Hawai‘i Speech League
- Second Language Exchange
- Science Fair
- Science Olympiad
- Botball Educational Robotics
- Math League/Math Counts
- Community Service
- PAAC
- Hawai‘i Health Occupations (HOSA)



Shayden K.
Gold Key



Ji Eun Y.
Congressional Art Exhibit
First Place



Stanford Speech Invitation

Mānoa Academy



University of Hawai'i - Mānoa Academy is a dual credit program that allows students to earn high school and university credits at the same time. Taught by UH Mānoa instructors, the program lets high school juniors and seniors begin their journey toward a baccalaureate degree in a way that fits conveniently into their daily lives.

ULS Cohort - Summer 2019 - SOC 100

ULS Activities



ULS Athletics Program

The athletic department serves two missions:

- to provide an opportunity to participate in the Interscholastic League of Honolulu (ILH)
- to develop the understanding of teamwork, dedication, respect, perseverance and school pride



ULS Athletics

University Jr. Bows

- Interscholastic League of Honolulu (ILH).
- Member of the ILH since 1959.
- Grades 7–12

Intermediate (gr. 7–9)



Pac-5 Wolfpack

Junior varsity (9–11)



Varsity (9–12)



ULS Athletics

In the 2018-2019 season,

- we had a total of 15 ULS sports teams with 171 student athletes participating
- our students played on 44 different Pac-5 sports teams with 143 ULS student athletes participating
- 14 ULS seniors pursued full or partial athletic scholarships to play at the collegiate level



ULS Athletic Recognitions

Each year ULS student athletes make ILH All-Star teams, honorable mentions, and appear in HHSAA state tournaments in different individual and team sports.

2020 HHSAA (6th Place) ULS Varsity Girls Swimming and Diving Team

2020 HHSAA Division II (5th Place) Pac-5 Varsity Boys Soccer

2019 HHSAA Division II (3rd place) ULS Varsity Girls Volleyball

2019 ILH Division II Champions ULS Intermediate Boys Basketball

2019 HHSAA (5th place) ULS Varsity Swim Team

2019 HHSAA Division II (5th place) ULS Varsity Girls Basketball

2018 HHSAA Division II (3rd place) Pac-5 Varsity Boys Soccer

2017 HHSAA Division II (4th place) Pac-5 Varsity Girls Soccer

2016 HHSAA Division II State Champions ULS Varsity Boys Basketball

2016 HHSAA Division II State Champions Pac-5 Varsity Girls Softball

2016 ILH Division II Champions ULS JV Boys Basketball

2016 ILH Division II Champions Pac-5 Intermediate Boys Soccer

2016 ILH Division II Champions Pac-5 Intermediate Boys Baseball

Student Support

- School Success Program
- College and Career Counselor
- Elementary and Middle/High School Counselor
- Dean of Students
- Diverse Learner Needs



Expectations

What are the expectations for students? for parents?

- Engagement
- Support
- Commitment



Accreditation

ULS is fully accredited as a K-12 institution by the Accrediting Commission for Schools, Western Association of Schools and Colleges through June 30, 2023.

In January 2019, we received official notification that our accreditation was reaffirmed through the end of the six-year cycle ending in June 2023.



ULS Indicators of Success

We find it important to emphasize that ULS does not necessarily aim to meet or exceed proficiencies on the Hawaii State Assessments. The state-level standards continue to change in reaction to changing legislation in education; our standards here at ULS have remained high for all students since our very beginning.

We emphasize performance-based assessment over time rather than traditional standardized testing, integrating formative and summative methods that support a practice of assessing for success.



ULS Indicators of Success

ULS has a 100% graduation rate and a 98-100% post-secondary education attendance rate.

ULS rates high among schools in the state in academic achievement

- 2014-2019 met or exceeded state average on SBAC
- 2014-2019 exceeded state average on ACT
- 2016-2019 met or exceeded state average on PSAT
- 2012-2019 met or exceeded national average on SAT



ULS Recognitions

- WASC Accredited 2016-2022
- Civil Beat 2019, ULS was recognized as the safest school in the state
- Honolulu Magazine 2019, ULS was recognized as the #1 High School in Hawai'i
- Great Schools College Success 2019 Award
- Niche Rankings 2018, ULS was recognized as the 2018 Best Public High School in Hawaii.
- Business Insider 2018, ULS was recognized as the best public high school in Hawaii.
- USA Today 2017, ULS was recognized as the best public high school in Hawaii.
- U.S. News and World Report America's Best High Schools Bronze Medal 2009, 2012, 2013, 2014, 2017, 2018
- 2013 Hawaii Charter School of the year
- Hawaii Distinguished School Awards 2003-2010
- National Merit Finalists and National Merit Scholarships Recipients
- Presidential Scholar
- National Art and Speech/Debate Awards

Here's our greatest asset and investment – our students



List of College Acceptances for the ULS Class of 2021

Arizona State University
 California Baptist University
 California State Polytechnic University, Pomona
 California State Polytechnic University, SLO
 California State University, Fullerton
 California State University, Long Beach
 California State University, San Marcos
 Chadron State College
 Chaminade University
 Chapman University
 Colorado Mesa University
 Colorado State University
 Creighton University
 Concordia University Irvine
 Eastern Arizona Community College
 George Mason University
 Gonzaga University
 Grand Canyon University
 Hampton University
 Hawaii Pacific University
 Honolulu Community College
 Hope International University
 Illinois Institute of Technology
 International Christian University, Japan
 Kapiolani Community College
 Leeward Community College
 Lewis and Clark College
 Linfield College
 Louisiana State University
 Menlo College
 Montana State University
 Morehouse College
 Mount Mercy University
 New York University, Abu Dhabi
 North Park University
 Northern Arizona University

Northwestern State University
 Occidental College
 Oregon Institute of Technology
 Oregon State University
 Pacific Lutheran University
 Pacific University
 Pepperdine University
 Rensselaer Polytechnic Institute
 Rochester Institute of Technology
 Saint Martin's University
 San Diego State University
 San Jose State University
 Seattle Pacific University
 Seattle University
 Temple University, Japan
 Texas A&M University
 Tufts University
 Tuskegee University
 University of Arizona
 University of Auckland
 University of California, Davis
 University of California, Irvine
 University of California, Riverside
 University of California, San Diego
 University of California, Santa Barbara
 University of California, Santa Cruz
 University of Colorado, Boulder
 University of Colorado, Colorado Springs
 University of Denver
 University of Hawaii, Hilo
 University of Hawaii, Manoa
 University of Hawaii, West Oahu
 University of Maryland
 University of Minnesota
 University of Montana Western
 University of Nevada, Las Vegas

University of Oregon
 University of Portland
 University of Puget Sound
 University of Queensland
 University of San Francisco
 University of Southern California
 University of Sydney
 University Technical Institute
 University of Utah
 University of Washington
 University of Wollongong
 Utah State University
 Whitman College
 Whitworth University
 Willamette University
 Virginia Polytechnic Institute and State University
 Washington State University
 Wright State University
 Xavier University of Louisiana

Frequently Asked Questions

- Technology in the Curriculum (1:1 program)
- Meal program
- Before and after school program
- Transportation
- UH Parking



Frequently Asked Questions

- **School Calendar**
- **New student orientation**
- **UH Facilities**

Orvis Auditorium

Kennedy Theatre

Andrews Outdoor Theatre

UH Track

Klum Gym

UH Library





UNIVERSITY LABORATORY SCHOOL CAMPUS MAP ALL BUILDINGS



University High School #3 (UHS3)

First Floor Classrooms
UHS3-101, UHS3-104
UHS3-130, UHS3-133
UHS3-136

Second Floor Classrooms
UHS3-201, UHS3-204
UHS3-206, UHS3-217
UHS3-220, UHS3-227
UHS3-230, UHS3-233

First Floor Offices
UHS3-111, UHS3-115
UHS3-121 (School Office)
UHS3-132, UHS3-135
ULS Conference Room

Second Floor Offices
UHS3-204, UHS3-205
UHS3-212, UHS3-215
UHS3-218
(Teacher Collaboration Center)
UHS3-225
(Student Collaboration Center)
UHS3-229, UHS3-232
UHS3-235

Castle Memorial (CM)

Elementary Classrooms
CM-109, CM-110, CM-111
CM-119 (Choir / Elem Math)

Visual Arts Classrooms
CM-120, CM-122, CM-125
CM-126, CM-127

Offices
CM-102, CM-114, CM-115

Multi-Purpose Building (MPB)

Classrooms
MPB-Bandroom, MPB-Cafeteria, MPB-103, MPB-103B

College of Education Portables (COEP)

COEP-N1
COEP-N2

COEP-N3
COEP-N4

Frog Classrooms

Classrooms
Frog 1, Frog 2

Lab School Portables (LSP)

ULS Athletic Department
LSP-1A - Athletic Office
LSP-1B - Training Room
LSP-1C - Weight Room

Classrooms
LSP-2
LSP-3A
LSP-3B

Locker Rooms (LR)

Boys Locker Room, Girls Locker Room, PE Office

P Parking
UH Zone 1 Lot (Passes Only)

R Restrooms
UH3 (1st and 2nd floors), Castle Memorial

Grey Buildings
UHM and College of Education (ULS Off-limits)



UNIVERSITY LABORATORY SCHOOL
A HAWAI'I PUBLIC CHARTER SCHOOL

[Support ULS](#)[Contact Us](#)

[Home](#) [About ULS](#) [News](#) [Academics](#) [Athletics](#) [Resources](#) [Admissions](#) [Contact](#) [Support ULS](#)



A HAWAI'I PUBLIC CHARTER SCHOOL

UNIVERSITY LABORATORY SCHOOL

HOME OF THE JUNIOR BOWS

University Laboratory School (ULS) serves two interlocking missions: to design and deliver the best possible education to our own students, and to serve the educational research and development community as a seedbed for innovation. Our school serves as a site for researching, developing, and demonstrating best practices in teaching, learning and assessment in grades K-12 while providing high quality education for all our students. We invite you to explore our website and learn more about ULS.

ULS Jr. Bows - Sideline Store

Link is on the school website.

The Official Junior Rainbows Apparel Store and University Laboratory School Merchandise for Junior Rainbows Fans, Parents and Alumni

UNIVERSITY OF
ULS
Team Sports



Enter search keyword



SHOP



MY CART (0)

Select From Hundreds Of Great Design Options! Customize Sports, Activities, Colors, Names, Numbers and More...

HOW DOES IT WORK?

1. CHOOSE YOUR ITEM
2. PICK A DESIGN
3. CUSTOMIZE IT

GET STARTED:

SHOP MEN'S

SHOP WOMEN'S

SHOP KID'S



TOP PRODUCTS



Nike All Purpose Short Sleeve



Lids Hoody Sweatshirt



Nike Core Hoody



Legend Poly Top Short Sleeve



J America Brushed V Pullover



Nike Tech Fleece Hoody



UNIVERSITY LABORATORY SCHOOL
Honolulu, Hawai'i

A Hawai'i Public Charter School