



UNIVERSITY LABORATORY SCHOOL
Honolulu, Hawai'i



UNIVERSITY OF HAWAII AT MANOA
College of Education

CR & DG Curriculum Research & Development Group
providing quality educational programs
& services for preschool through grade 12

ULS Administrative Team



A. Keoni Jeremiah
Principal



Tracy Teixeira
Dean of Students



Laura Cottongim
Dean of Curriculum & Instruction



Walt Quitan
Athletic Director



Shareef Wang
Business Manager

University Laboratory School Charter School

Mareva Nopuente
Admissions Coordinator



Life at the Lab School -Welcome



ULS Overview

- Mission and Vision
- A Brief History
- As a Laboratory School
 - Partnership with CRDG
- As a Charter School
- School Program
- Admissions Process



ULS Mission

To provide the best possible education to its students while supporting the creation, evaluation, and dissemination of quality programs for all students kindergarten through grade 12.



ULS Vision

All students graduate ready for college, work, and responsible citizenship.



Schoowide Learner Goals

All University Laboratory School will prepare its students to be ready for college, work, and responsible citizenship, through a program emphasizing disciplines of knowledge and habits of mind, as indicated by demonstrating skills development in the areas of critical thinking, collaboration, creativity, and communication. In addition, our school focuses on three strategic areas: education of our own students, research in educational best practices, and dissemination via professional development.

ULS Historical Roots

1896–1931 Territorial Normal & Training School serves as site for preparing teachers

1931 School becomes part of University of Hawai'i



1966 ULS becomes part of a new entity, the Curriculum Research & Development Group, serving as a laboratory for improving K–12 education

2001 ULS becomes a charter school and continues its partnership with CRDG.

2013 Historic name, University Laboratory School is restored.

Our University Partnership

UH COE and CRDG

CRDG Mission

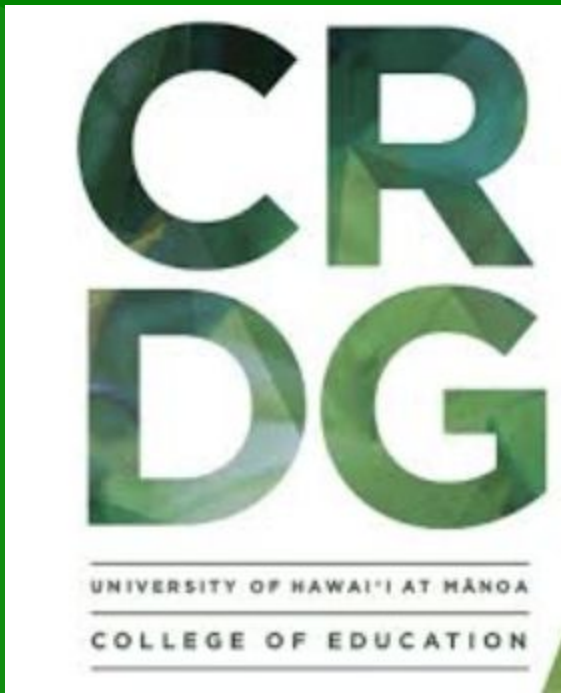
Researching, creating, evaluating, disseminating, and supporting quality educational programs for all students and teachers, preschool through post-secondary.



Dr. Barbara Dougherty
Director
CRDG



Dr. Nathan Murata
Dean
College of Education



Selected Current Projects

- **x to Why**
Games, interactive explorations, student and teacher materials (digital and print) for algebra
- **Opihi Project**
Explorations in Hawaii's intertidal pools
- **Digital Citizenry**
Multiple projects to support students' safe usage of the internet
- **360**
Use of virtual reality
- **Voice of the Sea**
Television series on marine science
- **Exploring Our Fluid Earth**
Marine science curriculum
- **Early Literacy for Native Hawaiian Students**
Developing reading skills

ULS-CRDG Developed Programs utilized locally and globally



CRDG-ULS PARTNERSHIP

CRDG

Research &
Development (R&D)

- Exploration
- Development
- Evaluation
- Dissemination



ULS

Laboratory for

Exploration
Experimentation
Assessment

Demonstration Site

Visitors
COE
Best Practices

Our Role as a Laboratory School

In addition to providing high quality education for our own students, the function of this school is experimentation and innovation in education with the intent to disseminate.

ULS sees hundreds of visitors annually to observe our unique collaborative learning environment, curriculum implementation, and innovative educational practices.

ULS as Demonstration Facility

Inquiry- and Discipline-Based Pedagogy:

- Teachers should be experts/practitioners in their discipline in order to demonstrate and model these practices in the most authentic way possible.
- Common Core emphasizes these “habits of mind” and practices associated with this approach through use of informational text, writing to sources, use of academic vocabulary, and evidence-based writing and explanations

Collaborative Learning Communities

- Redefining “seat time” and “group work” – breaking down classroom space and time with Google Apps for Education
- Model for schoolwide Technology Professional Development and 1:1 Pilot Program

“Disciplines of Knowledge” Perspective

- Each discipline has unique ways in which it conducts its inquiries and validates its knowledge, in order to develop and grow
- Habits of mind or practices within each discipline are key to developing both expertise/knowledge in a particular discipline, but also critical thinking in general
- Students should be taught the nature and practices of a discipline to promote deep engagement and conceptual development in that discipline
- Teachers should be experts/practitioners in their discipline in order to demonstrate and model these practices in the most authentic way possible.

The Importance of Technology

ULS is committed to 21st Century Skills, including Technological Literacy. We aim to develop and support our community of learners through engaging technology and cutting-edge practices.

In addition, we require the use of technology to facilitate communication between student, teacher, parent and administrator to better support and engage all learners in a flattened, more inviting educational environment.

School Program and Curricula Differs from Others

- Comprehensive, liberal education
- Inquiry-, problem-, and project-based
- Requires active learning
- Challenging
- Experimental



What is a Charter School?

Charter schools are nonsectarian public schools of choice that operate with freedom from many of the regulations that apply to traditional public schools; the basic concept is that charter schools exercise increased autonomy in exchange for greater accountability.

As a public school we are still guided by:

- Hawaii State Charter School Law
- Federal Education Legislation
- Federal Individuals with Disabilities Act (IDEA)

The “charter” details the school’s mission, program, goals, students served, methods of assessment, and ways to measure success. Our charter establishes ULS in partnership with CRDG as an educational laboratory.

Essential Features of University Laboratory School

- Heterogeneous grouping in all classes from across a diverse, purposive lottery of students to represent a demographic cross section of Hawai'i
- Teaching, learning, and demonstrations of knowledge based on disciplinary practices and habits of mind are the modes of interaction in every class, every day.
- All students enroll in a common curriculum by grade-level cohort that includes daily instruction in English language and literature, history and social science, natural science, mathematics, visual arts and performing arts. Students are taught in common classes without tracking.

University Laboratory School Charter Conditions

- The school enrolls a cross-section of students who typify the Hawai'i school population.
- All students participate in the same comprehensive education program
- All students are taught in common classes without ability tracking nor are they offered courses of varying rigor. The ULS belief is that the best should be available to all.
- Students and their parents must be willing to accept innovative and experimental programs that challenge the norms of current educational practices and change continually.

Funding

Charter School Per-Pupil Allocation

Contributions

ULS Foundation

ulsfoundation.org

ULS Booster Club

ULS Alumni Association

Governing Board Members

The purpose of the Governing Board of the University Laboratory School is to set policy and provide oversight for ULS in accordance with HRS, Chapter 302D. The Board ensures that ULS complies with the terms of the charter contract between the authorizer and the School, which pertain to and manage the financial, organizational, and academic viability of the school.

Mislyn Alensorin

Edward Aquino

Bradley Kai Fox

Linda Venenciano

Aaron Levine

Melvina Nakao

Everett Ohta

David Oride

Preet Nijjar

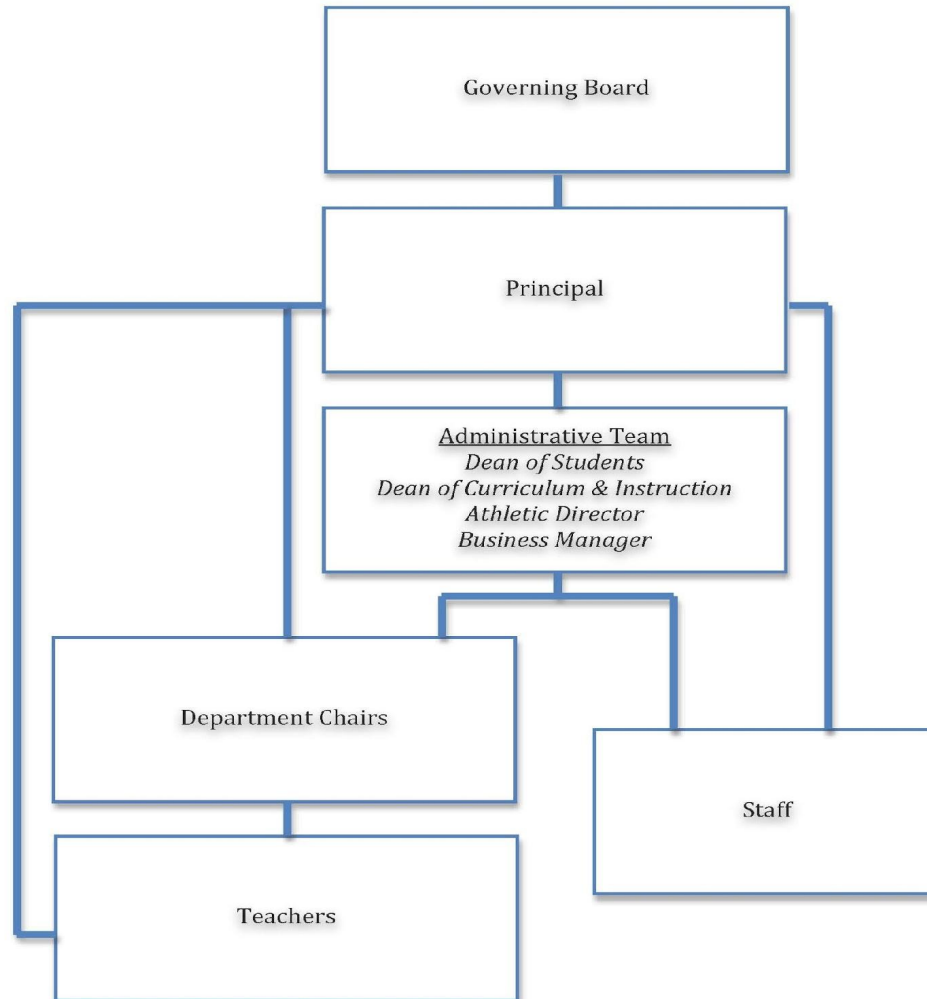
Denise Yoshimori-Yamamoto

Karyn Yoshioka

Keoni Jeremiah, Principal (ex-officio)

ORGANIZATIONAL CHART

**The Education Laboratory: A Hawai'i New Century Public Charter School
Organizational Chart**



“Disciplines of Knowledge” Perspective

- Each discipline has unique ways in which it conducts its inquiries and validates its knowledge, in order to develop and grow
- Habits of mind or practices within each discipline are key to developing both expertise/knowledge in a particular discipline, but also critical thinking in general
- Students should be taught the nature and practices of a discipline to promote deep engagement and conceptual development in that discipline
- Teachers should be experts/practitioners in their discipline in order to demonstrate and model these practices in the most authentic way possible.

The Importance of Technology

ULS is committed to 21st Century Skills, including Technological Literacy. We aim to develop and support our community of learners through engaging technology and cutting-edge practices.

In addition, we require the use of technology to facilitate communication between student, teacher, parent and administrator to better support and engage all learners in a flattened, more inviting educational environment.

School Program and Curricula Differs from Others

- Comprehensive, liberal education
- Inquiry-, problem-, and project-based
- Requires active learning
- Challenging
- Experimental



Features of ULS

Grades

Kindergarten	6th Grade
1st Grade	7th Grade
2nd Grade	8th Grade
3rd Grade	9th Grade
4th Grade	10th Grade
5th Grade	11th Grade
	12th Grade



Instructional Time

Kindergarten - 5th Grade

Monday, Tuesday, Thursday & Friday
7:45am - 2:30pm

Wednesday
7:45am - 2:00pm

6th Grade - 12th Grade

Monday, Tuesday, Thursday & Friday
7:45am - 3:15pm

Wednesday
7:45am - 2:35pm



ULS School Program

All students are engaged in a comprehensive curriculum by grade-level cohort every year.

- English, Mathematics, Social Studies, Science, Physical Education, Performing and Visual Arts
- Second Language offerings gr. 10–12 (Hawaiian, Japanese, and Spanish)
- Learning Laboratory (gr. 6–8)
- Computer Literacy
- Holomua Freshman Seminar (gr. 9)
- College and Career Seminar (gr. 10–12)

ULS Grades K - 5 Program

Grade K-1	Grade 2-3	Grade 4-5
Art	Art	Art
English Language Arts	English Language Arts	English Language Arts
Mathematics	Mathematics	Mathematics
Music	Music	Music
Physical Education	Physical Education	Physical Education
Science	Science	Science
Social Studies	Social Studies	Social Studies

Social Emotional Learning: Toolbox, Voices Literature & Writing

ULS Grade 6 - 8 Program

	Grade 6	Grade 7	Grade 8
English	Dramatic Language & Composition	Comedic Language & Composition	Narrative Literature & Composition
Math	Mathematics	Mathematics	Algebra I
Science	The Local Environment (Foundational Approaches in Science Teaching 1)	Matter and Energy in the Biosphere (Foundational Approaches in Science Teaching II)	Change Over Time (Foundational Approaches in Science Teaching III)
Social Studies	Pacific Studies & Anthropology	World Geography & Early Civilizations	Early America & United States Constitution
Art	Drawing & Painting	Sculpture, Drawing & Painting, Ceramics, Fiber Arts	
Music	Beginning Band, Choir, Orchestra	Intermediate Band, Choir, Orchestra	
Physical Education	Physical Education		
Other (required)	Learning Laboratory		

ULS Grade 9 - 12 Program

	Grade 9	Grade 10	Grade 11	Grade 12
English 4 yrs. req.	Speech, Poetry & Writing*	Asian & Pacific Literature & Writing*	Literature of the Americas & Writing*	British/ European Literature & Writing*
Math 4 yrs. req.	Integrated Math I	Integrated Math II	Integrated Math III	Integrated Math IV
Science 4 yrs. req.	Marine Science with Lab*	Practices in Physics & Technology with Lab*	Chemistry with Lab	Biology With Lab
Social Studies 4 yrs. req.	Modern History of Hawai'i*	Modern World History (China*, Japan*, and Others) & Geography	United States History & Government	Ethics*; Comparative Political/Economic Systems
Second Language 3 yrs. req.	N/A	Spanish I, Hawaiian I, Japanese I	Spanish II, Hawaiian II, Japanese II	Spanish III; Hawaiian III ; Japanese III
Art 4 yrs. req.	Students choose from Sculpture, Fiber Arts, Ceramics, or Drawing & Painting			
Music 4 yrs. req.	Students participate in Band, Chorus or Orchestra			
Physical Education	Phys. Ed., Health	P.E. Elective: Weightlifting		
Other (required)	Seminar- Holomua*	College & Career Seminar (three semesters)		
Electives 3 credits	N/A	Fitness & Flexibility; Global Leadership; Hula & Chant; Kimono Culture; Japanese Traditional and Pop Culture; Science Research; Select Choir; Speech; Wearable Art; Weightlifting; Yearbook.		

Electives

Current enrichment elective classes offered for grades 10–12:

Digital Photography
Fitness & Flexibility
Global Issues through film
Global Leadership
Hula & Chant
Japanese Culture
Kimono Culture

Science Research
Select Choir
Speech & Debate
Wearable Art
Weightlifting
Yearbook



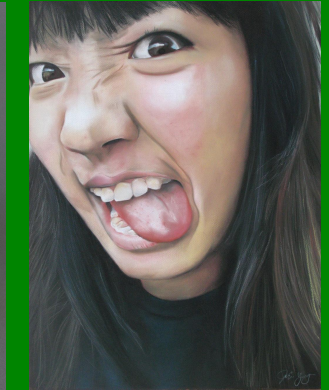
University Laboratory School

More Opportunities

- Writing Contests
- Spelling and History Bees
- Visual Art Awards
- Hawai'i Youth Symphony
- Oahu Select Band
- Hawai'i Speech League
- Second Language Experiences
- Science Olympiad
- Community Service
- Athletics



Gold Key 2014



Congressional Art Exhibit
First Place



Stanford Speech Invitation

School Activities



Athletics

University Jr. Bows

Pac-5 Wolfpack

- Interscholastic League of Honolulu (ILH).
- Member of the ILH since 1959.
- Grades 7–12

Intermediate (gr. 7–9)

Junior varsity (9–11)

Varsity (9–12)



Student Support

- School Success Program
- College and Career Counselor
- School Counselor
- Diverse Learner Needs



Expectations

What are the expectations for students?
for parents?

- Engagement
- Support
- Commitment



University Laboratory School

- Class of 2017 - 100% graduate, 98% post-secondary education
- Students among highest in State on Hawaii State Assessments and other standardized tests
 - In 2015-16, ULS had the highest college-going rate, on-time graduation rate, and ACT scores for Hawaii Public Schools
 - In 2016-17, ULS had the highest 4-year Graduation Rate (100%) and College-going rate.
- WASC Accredited - 2016-2022
- Charter Contract - 2017-2022
- ULS was ranked as #1 among the public high schools on O'ahu and received an A+ in the April 2017 issue of Honolulu Magazine (Grading the Public Schools)
- U.S. News and World Report America's Best High Schools Bronze Medal 2009, 2012, 2013, 2014, 2017
- National Medal in the 2017 Scholastic Art & Writing Awards
- National Speech and Debate Tournaments

ULS Current Projects and News - Highlights

- Research and demonstration site for UH College of Education, other UH Departments, and other education institutions
- Teacher Researchers - our faculty are lifelong learners, present at local, national and international conferences
- Innovative 1:1 technology program (HI DOE Future Ready Program)
- Good students, Good people - Social Emotional Learning program (Pillars of Peace Grant)
- ULS Facilities Improvements and access to UH Facilities



**Here's our
greatest
asset and
investment
– our
students**

Here's what we offer you...

Course Requirements	High School Diploma	Board of Education Recognition Diploma (Voluntary)	Board of Education Recognition Diploma with Honors (Voluntary)	University Laboratory School Diploma
English	4.0 credits including ELA 1 (1 credit) and ELA 2 (1 credit)	4.0 credits including ELA 1 (1 credit), ELA 2 (1 credit), and Expository Writing (0.5 credit) or the equivalent*	4.0 credits including ELA 1 (1 credit), ELA 2 (1 credit), and Expository Writing (0.5 credit) or the equivalent*	4.0 credits, including Speech, Poetry & Writing; Asian and Pacific Lit. & Writing; Lit. of the Americas & Writing; British/European Lit. & Writing
Social Studies	4.0 credits including Modern History of Hawaii (0.5 credit) and Participation in a Democracy (0.5 credit)	4.0 credits including Modern History of Hawaii (0.5 credit) and Participation in a Democracy (0.5 credit)	4.0 credits including Modern History of Hawaii (0.5 credit) and Participation in a Democracy (0.5 credit)	4.0 credits, including Modern History of Hawai'i; Modern World History & Geography; United States History & Government; Ethics (0.5); Comparative Political/Economic Systems (0.5)
Mathematics	3.0 credits	4.0 credits including, as a minimum, Algebra 1, Geometry, and Algebra II or the equivalent	4.0 credits including, as a minimum, Algebra 1, Geometry, and Algebra II or the equivalent	4.0 credits, including Geometry Learning Project; Integrated Math I/II, III, and IV.
Science	3.0 credits	3.0 credits including 2.0 credits in Biology, Chemistry, and/or Physics	3.0 credits including 2.0 credits in Biology, Chemistry, and/or Physics	4.0 credits, including Marine Science with Lab; Practices in Physics & Technology with Lab; Chemistry with Lab; Biology with Lab
World Language, Fine Arts, Career and Technical Education	2.0 credits in one of the specified courses	2.0 credits in one of the specified courses	2.0 credits in one of the specified courses	3.0 credits in Second Language, including Language I, II, III 4.0 credits in Performing Arts, including Band, Choir, or Orchestra 4.0 credits in Visual Arts, including Drawing, Painting, Sculpture, Ceramics, and/or Fiber Arts
Senior Project	Not required	1.0 credit	1.0 credit	N/A
Physical Education	1.0 credit including required PE (0.5 credit) and required PE elective (0.5 credit)	1.0 credit including required PE (0.5 credit) and required PE elective (0.5 credit)	1.0 credit including required PE (0.5 credit) and required PE elective (0.5 credit)	0.5 credit
Health	0.5 credit	0.5 credit	0.5 credit	0.5 credit
Personal/ Transition Plan	0.5 credit	0.5 credit	0.5 credit	2.0 including Holomua seminar and College & Career seminar
Electives	6.0 credits	5.0 credits	5.0 credits	3.0 credits
TOTAL	24.0 credits	25.0 credits	25.0 credits	33.0 credits

2012 Accepted Colleges

Academy of the Arts
 Bard College
 Brown University
 California Baptist University
 California Institute of the Arts
 California Lutheran University
 Chapman University
 Clark University
 College of the Holy Cross
 Colorado Mesa University
 Colorado State University
 Creighton University
 DePauw University
 Eastern Oregon University
 Gonzaga University
 Grinnell College
 Hampshire College
 Harvard University
 Hawai'i Pacific University
 Hillsdale College
 Honolulu Community College
 Kapiolani Community College
 Leeward Community College
 Lewis and Clark University
 Linfield College
 Loyola University Chicago
 Menlo College
 Mills College
 Montana State University Northern
 New Hope Christian College
 Northern Arizona University
 Occidental College
 Oregon State University
 Pacific University
 Pacific Lutheran University
 Pepperdine University
 Portland State University
 Puget Sound
 Rhodes College
 San Francisco State
 Saint Martin's University
 Santa Clara University
 Seattle University
 Seattle Pacific University
 Seton Hall University
 Snow College
 The Evergreen State College
 University California Davis
 University California Irvine
 University California San Diego
 University of Colorado Colorado Springs
 University of Hawai'i at Hilo
 University of Hawai'i at Manoa
 University of Illinois at Chicago
 University of Maryland Baltimore County
 University of Nevada Las Vegas
 University of Northern Colorado
 University of Oregon
 University of the Pacific
 University of Portland
 University of Puget Sound
 University of San Francisco
 University of Southern California
 University of Utah
 University of Wyoming
 Utah Valley University
 Vassar College
 Western Oregon University
 Whittier College
 Willamette University
 Yale University

2011 Accepted Colleges

Academy of Art University
 Adam's State College
 Arizona State University
 Art Institute of California: Hollywood
 Art Institute of California: San Diego
 Beloit College
 Bennington College
 Brown University
 California Baptist University
 California Institute of Arts
 California Lutheran University
 Chaminade University of Honolulu
 Clark University
 Colorado School of Mines
 Colorado State University
 Concordia in Irvine
 Corban University
 Cornell College
 Creighton University
 Culver-Stockton College
 Denver University
 DePauw University
 Eastern Michigan University
 Eastern Washington University
 Fort Scott Community College
 George Fox University
 Gonzaga University
 Hampshire College
 Hartwick University
 Hawai'i Pacific University
 Hofstra University
 Honolulu Community College
 Illinois Wesleyan University
 Kalamazoo College
 Kapi'olani Community College
 Lawrence University
 Loyola University of Maryland
 Marquette University
 Mt. San Antonio College
 Northern Arizona University
 Northern Colorado
 Occidental College
 Oregon Institute of Technology
 Oregon State University
 Pacific Lutheran University
 Pacific University of Oregon
 Portland State University
 Purdue University
 Rose-Hulman Institute of Technology
 Saddleback Community College
 Saint Joseph's College
 Seattle University
 St. John's University
 The Evergreen State College
 University of British Columbia
 University of California Irvine
 University of California Riverside
 University of Colorado Boulder
 University of Colorado Denver
 University of Hawai'i at Hilo
 University of Hawai'i at Manoa
 University of Massachusetts Amherst
 University of Massachusetts Boston
 University of Minnesota
 University of Nevada at Las Vegas
 University of Nevada Reno
 University of Northern Colorado
 University of Oregon
 University of the Pacific
 University of Portland
 University of Puget Sound
 University of San Francisco
 University of Southern California
 University of Washington
 Washington State University
 Washington University in St. Louis
 Western New Mexico University
 Western Washington University
 Westmont University
 Whitman College
 Whittier College
 Willamette University

2010 Accepted Colleges

American University
 Arizona State University
 Art Institute of New York University
 Bloomfield College
 Brenau College
 CSU Polytechnic San Luis Obispo
 Chaminade University
 Chico State University
 City College of New York
 Claremont McKenna College
 Clark University
 Colorado School of Mines
 Colorado State University Pueblo
 Connecticut College
 Creighton University
 Dana College
 DePauw University
 Doane College
 Eastern Washington University
 Georgetown University
 Gonzaga University
 Goucher College
 Hawai'i Pacific University
 Holy Names University
 Honolulu Community College
 Illinois Institute of Technology
 Kapi'olani Community College
 Lehigh University
 Lewis and Clark College
 Macalester College
 Marquette Manhattan College
 Menlo College
 Middlebury College
 New York Institute of Technology
 New York University
 Northern Arizona University
 Northern Colorado University
 Notre Dame University
 Oregon Institute of Technology
 Oregon State University
 Pacific Rim Bible College
 Pacific University
 Portland State University
 Rochester Polytechnic Institute
 Sacramento State University
 San Diego City College
 Santa Clara University
 Seattle University
 Simpson College
 Southern Methodist University
 Stanford University
 Texas Christian University
 The New School University
 Tufts University
 University of Arizona
 University of California Davis
 University of California San Diego
 University of California Santa Barbara
 University of California Santa Cruz
 University of Colorado at Boulder
 University of Hawai'i at Hilo
 University of Hawai'i at Manoa
 University of Hawai'i at West O'ahu
 University of Illinois Urbana Champaign
 University of Oregon
 University of the Pacific
 University of Portland
 University of Puget Sound
 University of San Diego
 University of San Francisco
 University of Texas at Austin
 University of Victoria, British Columbia
 University of Washington
 Vanderbilt University
 Washington State University
 Washington State University
 Western Washington University
 Whitman College
 Whittier College
 Whitworth College
 Willamette University
 Windward Community College
 Worcester Polytechnic University

2009 Accepted Colleges

Boston College
 California State University Long Beach
 California State University Los Angeles
 Cardinal Stitch University
 Case Western Reserve
 Chaminade University of Honolulu
 College of Southern Nevada
 Colorado School of Mines
 Colorado State University
 Concordia University
 Creighton University
 Eastern Arizona College
 Hanover College
 Hawai'i Pacific University
 Honolulu Community College
 Holy Names University
 Illinois College
 Illinois Institute of Technology
 Kapi'olani Community College
 Lewis and Clark College
 Lindenwood College
 Loyola Marymount University
 Menlo College
 Mills College
 Montana State University
 Montana Western University
 Mount St. Mary's College
 Newbury College
 Northern Arizona University
 Occidental College
 Oregon Institute of Technology
 Oregon State University
 Oxford College of Emory University
 Pacific University
 Pitzer College
 Portland State University
 Santa Barbara City College
 Santa Clara University
 Santa Monica Community College
 Scottsdale Community College
 Seattle University
 St. Mary's College
 Tulane University
 University of British Columbia
 University of California Davis
 University of California Irvine
 University of California Riverside
 University of Hawai'i at Hilo
 University of Hawai'i at Manoa
 University of Hawai'i at West Oahu
 University of LaVerne
 University of Michigan Flint
 University of Montana
 University of Montana Western
 University of Nebraska at Lincoln
 University of Nevada Las Vegas
 University of Oregon
 University of the Pacific
 University of Portland
 University of Puget Sound
 University of Redlands
 University of Rochester
 University of San Francisco
 University of Washington
 University of Wisconsin Madison
 Wake Forest University
 Washington State University at Pullman
 Western State College of Colorado
 Western Oregon University
 Whitworth University
 Willamette University
 Windward Community College
 Worcester Polytechnic Institute



Frequently Asked Questions

- Technology in the Curriculum
- Meal program
- Before and after school program
- Transportation
- Calendar
- UH Facilities
 - Orvis, Kennedy, Track, Klum Gym, UH Library
- UH Parking





UNIVERSITY LABORATORY SCHOOL
CAMPUS MAP ALL BUILDINGS



University High School #3 (UHS3)

- | | |
|---|---|
| First Floor Classrooms
UHS3-101, UHS3-104
UHS3-130, UHS3-133
UHS3-136 | Second Floor Classrooms
UHS3-201, UHS3-204
UHS3-206, UHS3-217
UHS3-220, UHS3-227
UHS3-230, UHS3-233 |
| First Floor Offices
UHS3-111, UHS3-115
UHS3-121 (School Office)
UHS3-132, UHS3-135
ULS Conference Room | Second Floor Offices
UHS3-204, UHS3-205
UHS3-212, UHS3-215
UHS3-218
(Teacher Collaboration Center)
UHS3-225
(Student Collaboration Center)
UHS3-229, UHS3-232
UHS3-235 |

Castle Memorial (CM)

- | | |
|--|---|
| Elementary Classrooms
CM-109, CM-110, CM-111
CM-119 (Choir / Elem Math) | Visual Arts Classrooms
CM-120, CM-122, CM-125
CM-126, CM-127 |
| Offices
CM-102, CM-114, CM-115 | |

Multi-Purpose Building (MPB)

- Classrooms**
 MPB-Bandroom, MPB-Cafeteria, MPB-103, MPB-103B

Frog Classrooms

- Classrooms**
 Frog 1, Frog 2

Lab School Portables (LSP)

- | | |
|---|--|
| ULS Athletic Department
LSP-1A - Athletic Office
LSP-1B - Training Room
LSP-1C - Weight Room | Classrooms
LSP-2
LSP-3A
LSP-3B |
|---|--|

Locker Rooms (LR)

Boys Locker Room, Girls Locker Room, PE Office

- P **Parking**
UH Zone 1 Lot (Passes Only)
- R **Restrooms**
UH3 (1st and 2nd floors), Castle Memorial
- Grey Buildings**
UHM and College of Education (ULS Off-limits)

Admissions

ULS may conform its student enrollment profile to the standard prescribed by the University of Hawaii College of Education in order to meet the College's research requirements.

Student Selection by Lottery

At ULS, we create a laboratory for conducting education related research. As provided in State Law, ULS may conform its student enrollment to meet the research requirements of the College.

As a charter, we must utilize a lottery system. For our research needs, our lottery is conducted using the following factors: 1. Family socioeconomic status 2. Ethnicity; 3. Gender; 4. Ability measured by test score (not for Kindergarten)

Our intake years are Grades K and Grade 6. Other Grade levels are filled as openings become available.

Kindergarten

A child must be 5 years old on or before July 31 to be eligible for kindergarten.

Grade 6

Successful completion of your child's current 5th grade academic program, as well as completion of the orientation and enrollment process.

Admissions Info 2019-2020

Admissions

University Laboratory School admissions application and information for the 2019-2020 school year are now available.

Accepting applications for all grades: Kindergarten – Grade 12

Application period: November 1, 2018 – January 31, 2019.

Application period is now open.

[Click here to Apply Online](#)

[ULS Admissions Information \[PDF\]](#)

[ULS Admissions Application FAQ \[PDF\]](#)

[ULS Admissions Application \[PDF\]](#)

[ULS Admissions Policy \[PDF\]](#)

ULS Admissions Information Meeting

Saturday, December 1, 2018 | 9:00 a.m. – 10:00 a.m.

Multi-Purpose Building

ULS Admissions

Mareva Nopuente, Admissions Coordinator

admissions@universitylaboratoryschool.org

Phone: (808) 956-7844

Please do not call the main school office phone line for admissions questions. Use the admissions phone line at 956-7844.

ULS Admissions Resources

[ULS Admissions Application \[PDF\]](#)

[ULS Admissions Information \[PDF\]](#)

[ULS Admissions FAQ \[PDF\]](#)

[ULS Admissions Policy \[PDF\]](#)

University Laboratory School Charter School

Mareva Nopuente
Admissions Coordinator



Admissions Phone: 956-7844

admissions@universitylaboratoryschool.org

www.universitylaboratoryschool.org/admissions/

Please do not call the main school office line for admission questions. Use the admissions phone line, 956-7844.

How do I apply?

- Apply online

www.universitylaboratoryschool.org/admissions/

- Download a pdf copy of the application form
- Pick up an application in the admissions office
 - University High School Building 3, room 115
 - 7:15 a.m. - 3:45 p.m.

What other documents must I submit with the application?

6th Grade Application:

- 4th grade standardized test scores/results for reading and mathematics taken by the applicant.
- 4th & 3rd grade final report cards or transcripts
- First quarter report card for the current school year

Non-Entry Application:

- Most recent standardized test scores/results for reading and mathematics taken by the applicant.
- Final report cards or transcripts for the past two (2) years
- First quarter report card for the current school year

When is the deadline?

- For Entry Level Openings (gr. K and 6)
 - Postmarked by January 31, 2019
- For Non-Entry Level Openings (1-5, 7-12)
 - Postmarked by January 31, 2019

**COMPLETE APPLICATIONS MUST BE RECEIVED
BY THESE DEADLINES. NO EXCEPTIONS.**

When do we receive notice if we were selected?

Kindergarten & 6th grade applicants will be notified by mid-March

Non-Entry Level applicants (Grades 1-5 & 7-12) are only notified if selected (April-July)

I'm still undecided if I want to apply, how do I get more information?

www.universitylaboratoryschool.org

- Admissions Information page

Application

Application Information Sheet

Admissions FAQ

Admissions Policy

universitylaboratoryschool.org

[Home](#) | [Support ULS](#) | [Contact](#)



UNIVERSITY LABORATORY SCHOOL
A HAWAI'I PUBLIC CHARTER SCHOOL

[Home](#)

[About ULS »](#)

[Academics »](#)

[School Life »](#)

[Athletics](#)

[Resources](#)

[Admissions](#)

[Support ULS »](#)

[Contact »](#)



University Laboratory School (ULS) is a public charter school serving two interlocking missions: to design and deliver the best possible education to our own students, and to serve the educational research and development community as a seedbed for innovation. Our school serves as a site for researching, developing, and demonstrating best practices in teaching, learning and assessment in grades K-12 while providing high quality education for all our students. We invite you to explore our website and learn more about ULS.



Life at the Lab School video

- The video “Life at the Lab School – 2014” on the homepage of our website. This ULSMedia production describing the different disciplines of knowledge that form the foundation of the school’s constructivist, experiential curriculum. It features interviews with teachers and students along with footage of a broad range of student activities and daily life.



UNIVERSITY LABORATORY SCHOOL
Honolulu, Hawai'i



UNIVERSITY OF HAWAII AT MANOA
College of Education

**CR
DG** **Curriculum Research
& Development Group**
providing quality educational programs
& services for preschool through grade 12